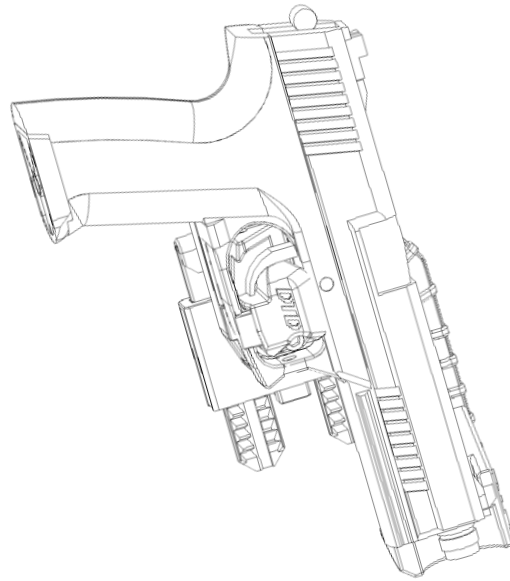
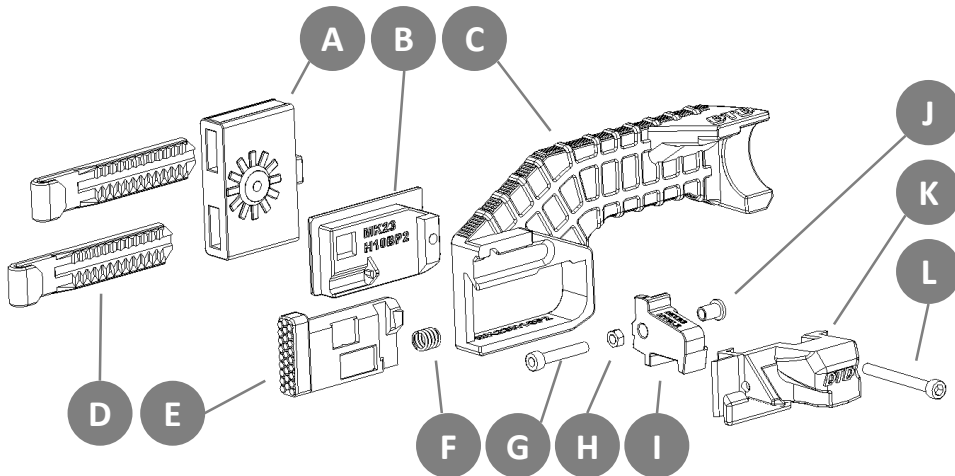




MK23 3D-Printed Retention Holster System

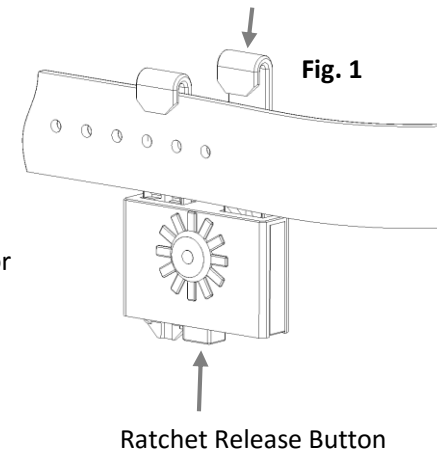


- A. Mounting Unit
- B. Back Plate
- C. Frame
- D. Ratchet Hook
- E. Release Button
- F. Return Spring
- G. M5x30
- H. M5 Nut
- I. Retention Latch
- J. Latch Bush
- K. Trigger Guard Boss
- L. M5x50

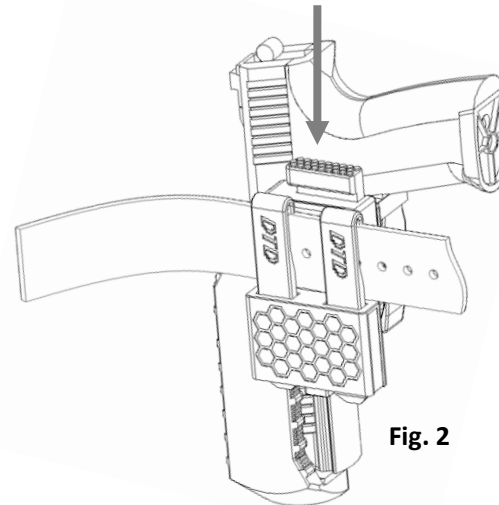


Fitting the holster

1. Secure the mounting unit (A) to your belt or MOLLE webbing loop as shown in Fig.1.
2. Ensure the ratchet hooks (D) are providing enough compression to keep your holster securely attached.
3. To detach your holster, press the button underneath the mounting unit and pull the entire holster away from the ratchet hooks.
4. Adjustments to the holster mounting angle can be made in 30° increments by loosening the boss bolt (L), rotating the holster and then re-tightening the boss bolt when the desired position has been attained.



Press button to open retention latch



Using the holster

1. Press down on the holster button (E) to open the retention latch (I), enabling you to holster your Mk23 as shown in Fig.2.
2. Firmly press your Mk23 sideways into the holster unit until you hear the latch (I) snap closed.
3. To draw your Mk23 press down on the holster button; your Mk23 will now release.
4. The retention latch will remain in the open position until the MK23 is re-fitted to the holster.

Warning: The Mk23 retention Holster is designed to only be used with airsoft replicas and should never be used with a firearm.